



# DATABASE APPLICATIONS (240)

## REGIONAL – 2018

**Production:**

Job 1: Employee Table	_____	(100 points)
Job 2: Vehicle Table	_____	( 90 points)
Job 3: Create a Permanent Relationship	_____	( 20 points)
Job 4: Vehicle Type Query	_____	( 60 points)
<i>TOTAL POINTS</i>	_____	<i>(270 points)</i>

**Graders: Please double check and verify all scores and answer keys!**

Property of Business Professionals of America.  
May be reproduced only for use in the Business Professionals of America  
*Workplace Skills Assessment Program* competition.



**DATABASE APPLICATIONS  
SCORING SHEET**

<i>Unless indicated otherwise, student receives all points or none.</i>	<b>Points Possible</b>	<b>Points Earned</b>
<b>Job 1 – Employee Table (100 points maximum)</b>		
Designed as instructed (10 points off per field for inaccurate field names, inappropriate data types, and properties not set as instructed)	<b>70</b>	
Proofreading/data entry (10 points – Zero errors; 9 points – 1 error; 7 points – 2 errors; 5 points – 3 errors; 0 points – 4+ errors)	<b>10</b>	
Sorted by Hire Date (descending)	<b>10</b>	
Printed in portrait orientation (all data shows, 1 page)	<b>10</b>	
<b>Job 2 – Vehicle Table (90 points maximum)</b>		
Designed as instructed (10 points off per field for inaccurate field names, inappropriate data types, and properties not set as instructed)	<b>60</b>	
Proofreading/data entry (10 points – Zero errors; 9 points – 1 error; 7 points – 2 errors; 5 points – 3 errors; 0 points – 4+ errors)	<b>10</b>	
Sorted by Vehicle Num (ascending)	<b>10</b>	
Printed in landscape orientation, 1 page, all fields fully visible	<b>10</b>	
<b>Job 3 – Create a Permanent Relationship (20 points maximum)</b>		
Relationship created	<b>10</b>	
Printed with both tables fully visible	<b>10</b>	
<b>Job 4 – Vehicle Type Query (60 points maximum)</b>		
Correct fields are visible: Last Name, First Name, Vehicle Make, Vehicle Model (5 points off for each missing field)	<b>20</b>	
Sorted by Last Name (ascending)	<b>10</b>	
Results show design correctly joins both tables (no extra records)	<b>20</b>	
Printed in portrait orientation, 1 page, all fields fully visible	<b>10</b>	
<b>Total Points Earned</b>	<b>270</b>	



## Printout 1: Employee Table

Employee XX-XXXX-XXXX

EmployeeID	LastName	FirstName	DLNumber	HireDate	DOTPhysicalDue	VehicleNum
MDK1045	Meyer	Roger	104549288	2/15/2012	3/26/2018	235
ASD3021	Renick	Edna	104529483	10/21/2009	11/23/2018	214
HRD3401	Smith	Julie	104839103	4/14/2008	5/26/2018	225
FSD3920	Rosen	Harvey	104950293	5/21/2006	6/18/2018	229
CEO1456	Wells	Nancy	101142748	3/18/2003	4/23/2018	218
ITD3019	Carlson	Tom	106930583	11/3/2001	12/14/2018	224

### Note to Grader:

- Sort by HireDate (descending)

## Printout 2: Vehicle Table

Vehicle XX-XXXX-XXXX

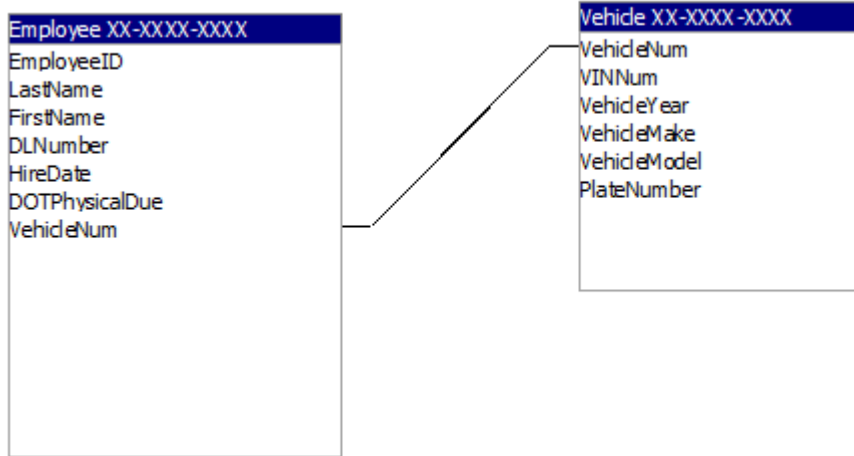
VehicleNum	VINNum	VehicleYear	VehicleMake	VehicleModel	PlateNumber
214	1HBH41JXMN109186	2013	GMC	Yukon	H23308
218	1HGBH41JXMN39186	2017	Ford	Focus	150908
224	JHLRD77874C026456	2016	Toyota	Camry	K54614
225	1GNCS1Z3M0115561	2017	Dodge	Challenger	H53507
229	1G1YZ23J9P5800001	2016	Hyundai	Sonata	YTE834
235	1G1YY25R695700001	2015	Nissan	Murano	139408

### Note to Grader:

- Sort by VehicleNum (ascending)



## Printout 3: Relationship Report



## Printout 4: Vehicle Type Query

Vehicle Type XX-XXXX-XXXX Query

LastName	FirstName	VehicleMake	VehicleModel
Carlson	Tom	Toyota	Camry
Meyer	Roger	Nissan	Murano
Renick	Edna	GMC	Yukon
Rosen	Harvey	Hyundai	Sonata
Smith	Julie	Dodge	Challenger
Wells	Nancy	Ford	Focus

### Note to Grader:

- Sort by LastName (ascending)